

Summer | Issue 1

April 2025



Summer term 1

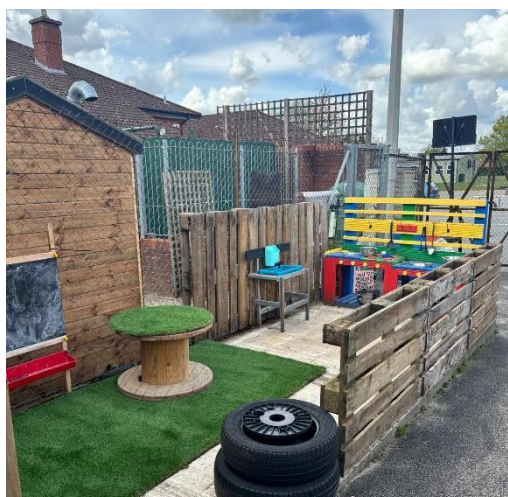
Welcome to the last term of the school year, we hope you all had a lovely Easter break.

At the end of this term we will be waving off some children off to 'Big' School. As you may know the children all have name cards, their name with a picture of an item beginning with their name, so George might have a giraffe. This has been to help them begin to recognise their name in print. This term all children going to school will have their name card changed to show their first and surname only, no picture. This is just the next step in supporting their transition to school and helping them recognise their name.

**What have
we been up
to...**

Over the Easter holidays we made some big changes to the layout of the preschool.

We were lucky enough to acquire some space outside of the preschool gate which has enabled us to move our two large sheds into. This has given us a lot more play space in the preschool garden for the children.



Inside the preschool we finally took the plunge to remove the three large storage cupboards we have wanted to move for a long time. It was a scary decision and one we were all probably regretting at one stage of the big sort out! Hopefully you agree the room looks a lot bigger and more inviting. The children seem love the changes and enjoy accessing their own resources following their own interests and ideas.



We began the term learning about Spring with lots of themed craft activities and sensory trays. We have all planted sunflowers seeds; we had a tractor visit and a visit from a little lamb.



This week our theme is 'Under the sea' and we continue with 'People who help us' and then 'Healthy eating' to finish this short half term.

Betsy Bear is a busy bear and her adventures continue. She enjoys holidays and days out but is equally happy to have a nice relaxing weekend so please don't feel any pressure to make extra plans for her when she comes to stay with you!



Staff Changes

There have been no staff changes.

Fundraising

A BIG thank you for all your support with the Duck Race, the ducks were a sell out once again! This year saw our first corporate ducks enter the race. Taking on the challenge was:

Salus Mortgage Solutions, Chessum Communications, Gems Aqua Stars, TRS Tank Replacement Services, Tom Soot Chimney Sweep, R.W Duffield, Jewson, A&T Clearances & Van Services, H Banham, Wendling Beck, Wildscapes Norfolk, Gee Gee and Bob Bob, Supplmnt.com, and Greenstone.



Congratulations to the winner R.W Duffield



With the glorious weather we have had recently it made the race a tricky one for our ducks this year. They struggled through the reeds, branches and shallow water over what seemed like several hours to the finish line! Swimming with all their might, the first three crossed the line and the winners received their hampers. Congratulations! Keep an eye out on Facebook and Famly for the total raised!



As you shop “easyfundraising.co.uk” is another way you could also help raise money for the preschool. You can do so by following the link below to register your support and a percentage of what you spend will be donated to the pre-school.

www.easyfundraising.org.uk

“**My School Fund**”, in association with Sainsbury’s, Argos and ESPO, links your spend at these shops with your chosen school, meaning that every time you make a purchase you both benefit. Both the school and you will receive an eGift card to spend at participating retailers based on a percentage of your overall spend. Visit www.myschoolfund.org for more details and to sign up for free.

‘PRESCHOOL WISHES’ located on the entrance fence. This is our way of asking for small donations of items for daily cleaning products like anti-bacterial spray or resources we can use for messy play like shaving foam or corn-flour. If you are able to help by donating one of the items, it helps to keep some of our costs down. Just hand one of the dowels to a member of staff to let them know you will be able to donate the item. Thank you in advance for your support.

FUNRAISING HELP Our fundraising events are essential to support the running of the preschool and we need as much help as possible. Do you feel like you could sometimes help with our fundraising events but could not commit to joining the committee? We have a WhatsApp group dedicated to this. In this group there are discussions about different events we could hold, up and coming events, jobs/tasks required before the event and support at the event. You can join the group and offer your help as and when you can. Please speak to Abby or Hollie to be added.

Babies
and
Toddlers



Beetley Bears

Run by Beetley and District Preschool

Stay and Play group.
Age range: 0-4 years
£4 per family of up to 2 children,
includes a snack for the children
and a hot drink for adults.
Additional children are 50p.
9.30am-11am

Beetley Village Hall
High House Road
Beetley
NR20 4BY

Thursdays
Term Time

01362 860860
office@beetley-preschool.org

Don't forget we run a stay and play session every week at Beetley village hall. Kirstie follows the themes of the preschool providing a ranges of activities and toys to suit children aged 0-4. Please do pop along!



Funding

Preschool funding is currently available for 3–4-year-olds. This consists of 15 hours universal entitlement for all children which becomes available the term after their 3rd birthday. In addition, for working parents of 3–4-year-olds this can be extended to 30 hours per week. Working parents/carers of 2 year olds can claim 15 hours funding or there is funding available if you are claiming certain benefits. To keep up to date with what you are entitled to, go to the Childcare Choices website at www.childcarechoices.gov.uk

Did you know that we may be entitled to £300 additional funding to improve the education of your 3 or 4 year old? This is called Early Years Pupil Premium, EYPP and to find out if you qualify call the Family Information Service on 0344 800 8020 or go to www.norfolk.gov.uk/eypp

The Preschool Committee

We are seeking new committee members and desperately need a treasurer and secretary. Without these positions filled the preschool is unable to run. If you or anyone you know are interested please get in touch.

We are a committee run preschool and without our committee the preschool would have to close. We meet once a month, usually at the beginning of the month on a Monday from 7pm. During these meetings we discuss the past month at preschool, the preschool finances, we plan fundraising events to support the preschool and discuss and make decisions, with regards to the running of the preschool. It's a great opportunity for you to get involved and have your say in supporting the preschool and providing the best experiences for your child and the other children. If you would like to be involved, please message or speak to a member of staff/committee.

Our current committee members are:

Charlie Wood (Chairperson)

Will Wilson (Vice Chair)

Unfilled position (Treasurer)

Unfilled position (Secretary)

Zoe Lawrence (H&S Officer and Fundraising coordinator)

Abigail Jenkins (Preschool Manager)

Danielle Edwards, Laura Harvey, Becca Reynolds

Policies

The policies which are currently being reviewed and adopted are: Transitions, The role of the key person, Registration form, Parental Involvement and Promoting positive behaviour. Updated copies will be able on our website soon or speak to Abby or Hollie.


Things to remember...

Please do not park your car in the horse-shoe area outside of the school gates or in the school car park. We appreciate that parking outside school can be a challenge, but this area needs to be kept clear for emergency vehicles, buses and deliveries.

If your child is unwell, please keep them at home and let the preschool know. If your child has sickness or diarrhea they should not return to preschool until 48 hours after the last time it occurred; if your child has been given Paracetamol on a morning, they would normally attend preschool, they should remain at home and if your child has a continuous new cough, high temperature and/or cold symptoms they should also remain at home. This will help protect us all. Thank you.

Dates for the Diary

23 rd April – 18 th July	Summer term
Monday 19 th May	Activity Morning
26 th -30 th May	Half term
16 th -20 th June	Sponsored Bike-a-thon
Tuesday 8 th July	Sports day
Wednesday 16 th July	Trip
Friday 18 th July	Last day of preschool
Monday 21 st July	Graduation



Norfolk

County Council

2024-2025

Norfolk Model Calendar

This calendar applies to community schools, community special schools, VC schools and nursery schools and sets the days on which school transport will be provided. While most Foundation, VA, foundation special, free schools and academy trusts who are able to set their own dates, adopt the Norfolk Model, we advise you to check with your child's school before making holiday or other commitments.

September 2024

M	T	W	T	F	S	S
						1
2	3	4	5	6	7	8
9	10	11	12	13	14	15
16	17	18	19	20	21	22
23	24	25	26	27	28	29
30						

October 2024

M	T	W	T	F	S	S
	1	2	3	4	5	6
7	8	9	10	11	12	13
14	15	16	17	18	19	20
21	22	23	24	25	26	27
28	29	30	31			

November 2024

M	T	W	T	F	S	S
				1	2	3
4	5	6	7	8	9	10
11	12	13	14	15	16	17
18	19	20	21	22	23	24
25	26	27	28	29	30	

December 2024

M	T	W	T	F	S	S
						1
2	3	4	5	6	7	8
9	10	11	12	13	14	15
16	17	18	19	20	21	22
23	24	25	26	27	28	29
30	31					

January 2025

M	T	W	T	F	S	S
		1	2	3	4	5
6	7	8	9	10	11	12
13	14	15	16	17	18	19
20	21	22	23	24	25	26
27	28	29	30	31		

February 2025

M	T	W	T	F	S	S
				1	2	
3	4	5	6	7	8	9
10	11	12	13	14	15	16
17	18	19	20	21	22	23
24	25	26	27	28		

March 2025

M	T	W	T	F	S	S
				1	2	
3	4	5	6	7	8	9
10	11	12	13	14	15	16
17	18	19	20	21	22	23
24	25	26	27	28	29	30
31						

April 2025

M	T	W	T	F	S	S
	1	2	3	4	5	6
7	8	9	10	11	12	13
14	15	16	17	18	19	20
21	22	23	24	25	26	27
28	29	30				

May 2025

M	T	W	T	F	S	S
1	2	3	4	5	6	7
8	9	10	11	12	13	14
15	16	17	18	19	20	21
22	23	24	25	26	27	28
29	30	31				

June 2025

M	T	W	T	F	S	S
				1		
2	3	4	5	6	7	8
9	10	11	12	13	14	15
16	17	18	19	20	21	22
23	24	25	26	27	28	29
30						

July 2025

M	T	W	T	F	S	S
	1	2	3	4	5	6
7	8	9	10	11	12	13
14	15	16	17	18	19	20
21	22	23	24	25	26	27
28	29	30	31			

August 2025

M	T	W	T	F	S	S
				1	2	3
4	5	6	7	8	9	10
11	12	13	14	15	16	17
18	19	20	21	22	23	24
25	26	27	28	29	30	31

Key : White dates - schools open to pupils

Yellow dates - pupil holiday

Red dates - bank holiday

Five staff training days will be selected from yellow dates, we suggest 2 & 3 September, 25 October, 6 January and 22 April. Some may choose to use twilight hours for staff training instead of some or all of these.